



**Outstanding specialist school:
from vision to reality**



Our Vision and Mission Statement

To be the international Centre of Excellence in Autism education,
research and professional development

Our Motto

We want Abbot's Lea to be the best specialist school in the world!

Brief modern history...



Est: 1952



Junction 1 – Spring 2015



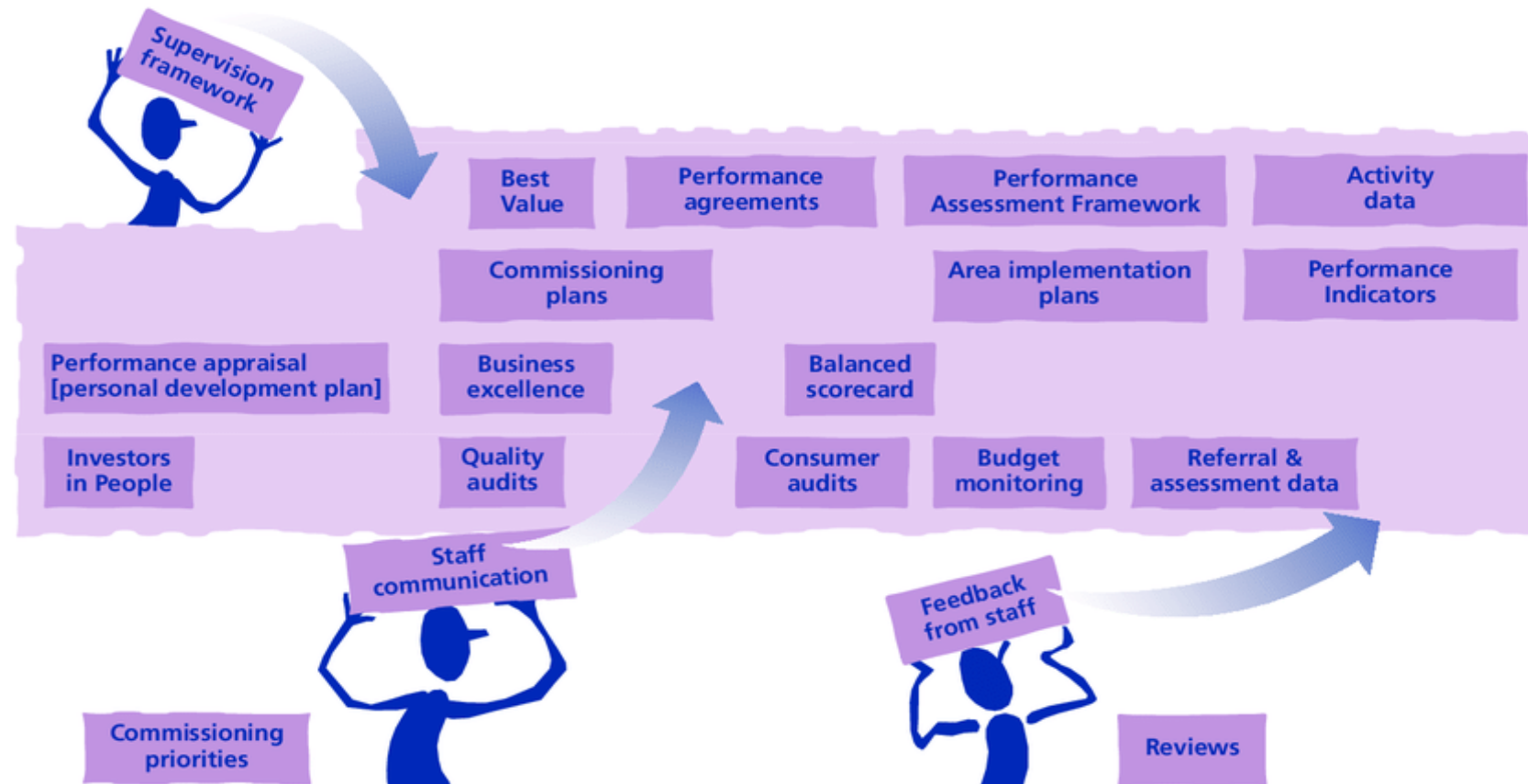
Junction 2 – January 2016



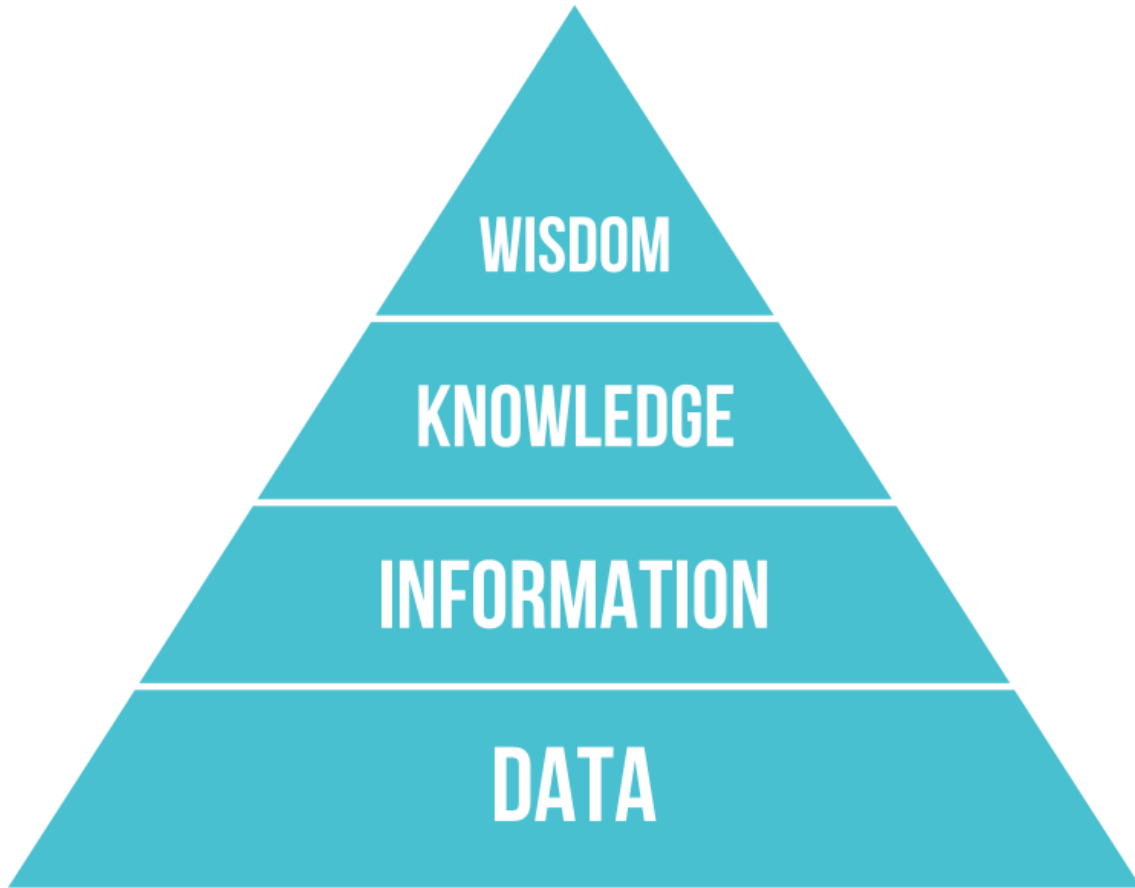
Junction 3 – August 2016



Junction 4 – September 2016



Junction 5 – December 2016



Junction 6 – January 2017



Junction 7 – September 2017



Junction 8 – September 2018



Junction 9 – September 2019



Junction 10 – here and now...



Our Vision and Mission Statement

To be the international Centre of Excellence in Autism education,
research and professional development

Our Motto

We want Abbot's Lea to be the best specialist school in the world!

Autism and Co-existence



Our Student Population

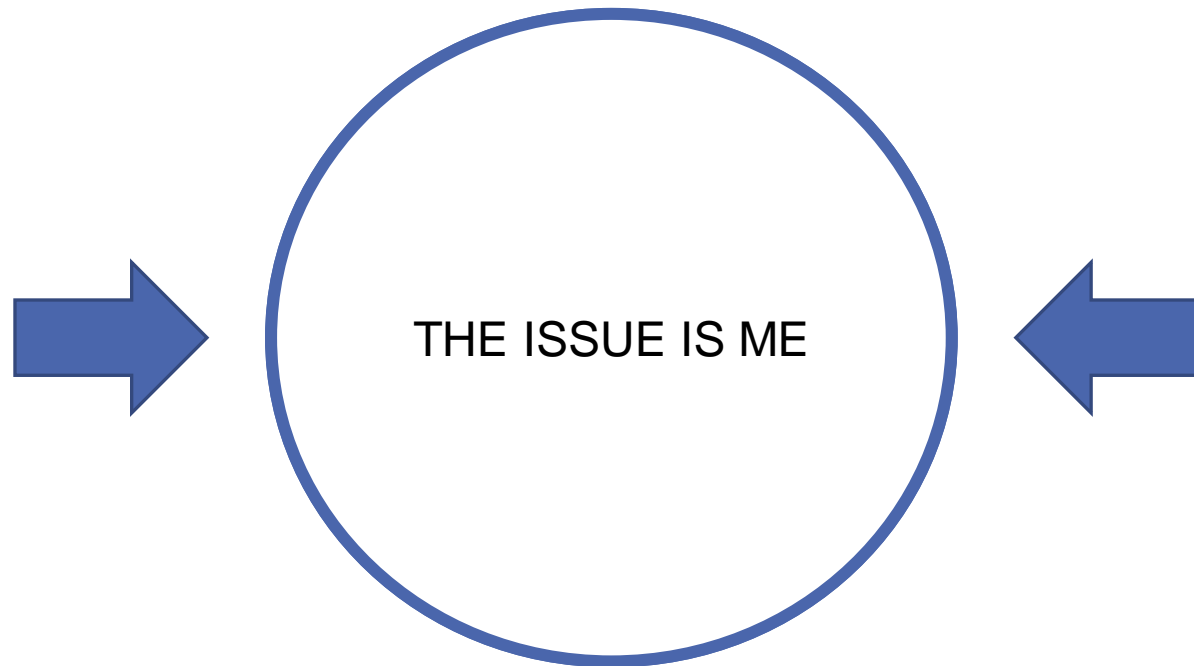
Year	Males	Females	Total
Year R	3	0	3
Year 1	7	1	8
Year 2	6	1	7
Year 3	10	2	12
Year 4	13	3	16
Year 5	18	3	21
Year 6	23	0	23
Year 7	22	4	26
Year 8	27	1	28
Year 9	32	2	34
Year 10	13	6	19
Year 11	20	3	23
Year 12	12	4	16
Year 13	11	0	11
Year 14	11	2	13
Totals	228	32	260
%	87.69	12.31	100%

Count of Name	Primary Need	Secondary Need
Need Type Description		
Autistic Spectrum Disorder	251	7
Moderate Learning Difficulty	1	118
Multi-Sensory Impairment	0	2
Other Difficulty/Disability	2	14
Severe Learning Difficulty	1	6
Social, Emotional and Mental Health	1	8
Specific Learning Difficulty	1	3
Speech, Language or Communication Need	3	5
Grand Total	260	163

First Language	Numbers	%
English	245	94.23%
Believed to be English	2	0.77%
Believed to be other than English	3	1.15%
Other	10	3.85%
	260	

Eligible for FSM	114	43.84%
------------------	-----	--------

The Medical Model of Disability



‘The best schools have high ambitions and aspirations for learners on the autism spectrum: for them to reach their full potential and be included in school and society.’

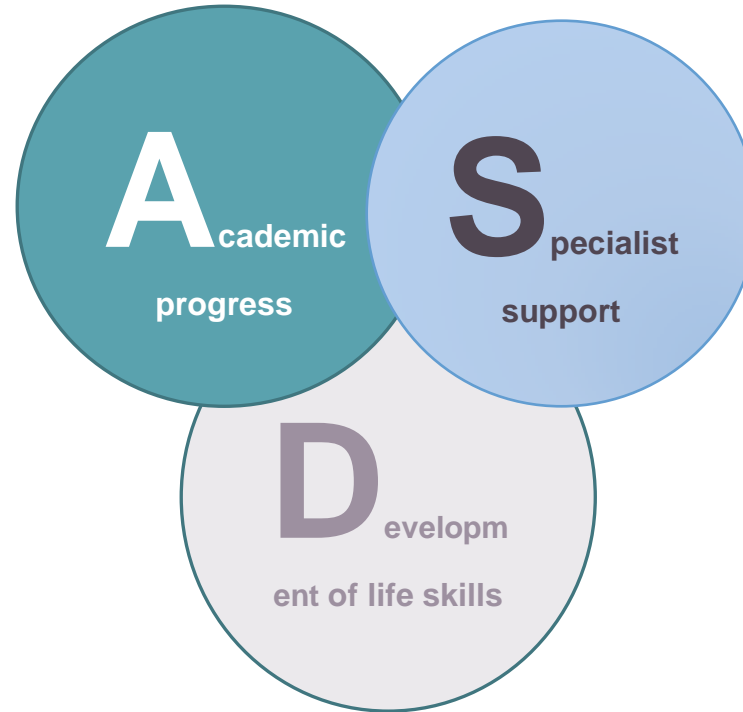
National Autistic Society, 2019

Our Philosophy of Education: The ASD Model ©

In our work with the students, we will focus equally on:

1. Academic progress
2. Specialist therapeutic support
3. Development of life skills

What The ASD Model © looks like?



Our Code of Conduct: The Golden Rules ©:

1. Be here. Every day...
2. Work hard and be nice
3. Never give up on yourself and others
4. Stay positive and be happy!

Our School Development Plan Strategy

1. Effectiveness of Leadership and Management

To be the international Centre of Excellence in Autism education, research and professional development

2. Our Students

To provide outstanding education to the students

3. Our Families

To work in united partnership with the families

4. Our Team

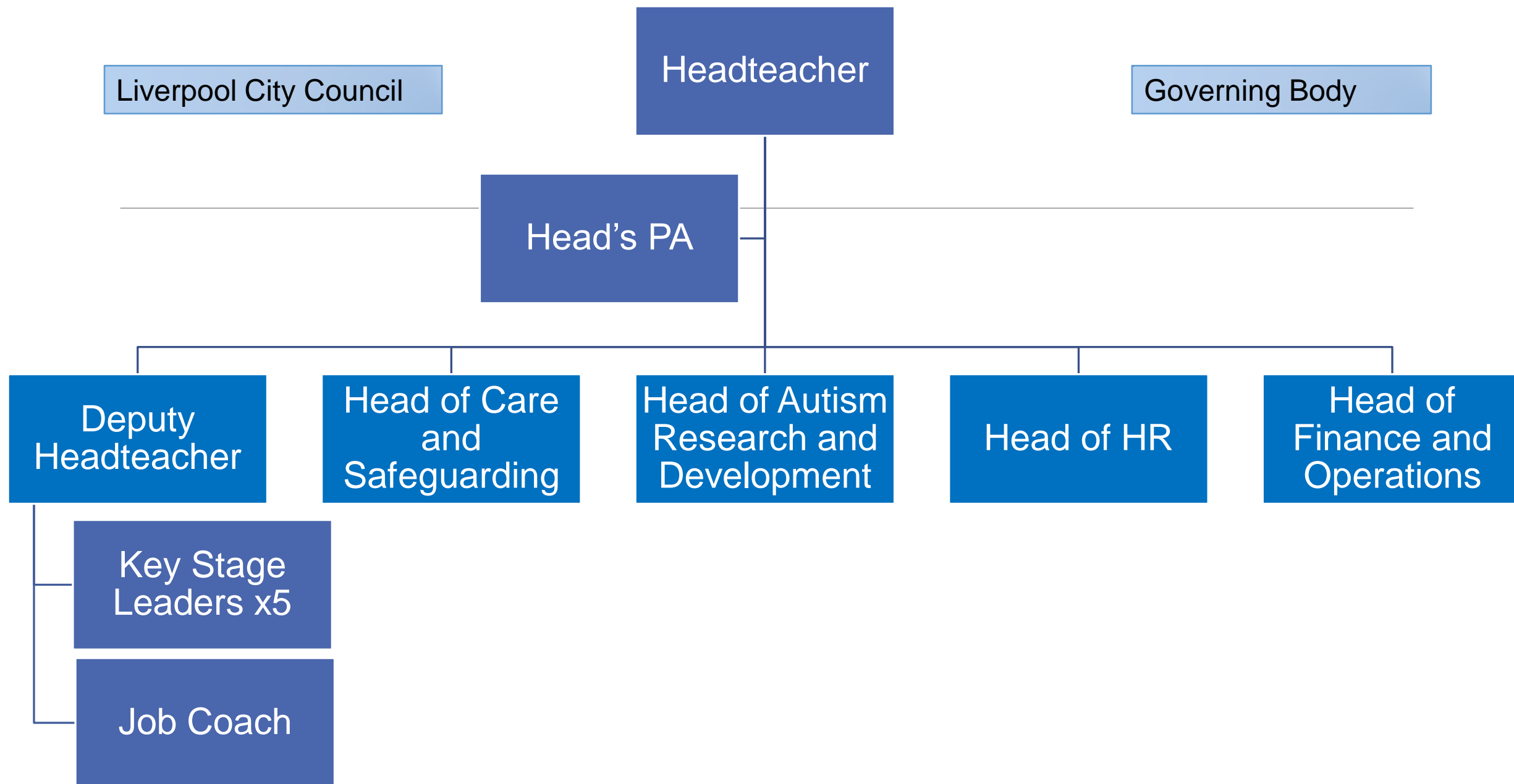
To recruit, develop and retain the best professionals

5. Our Autism Research and Development

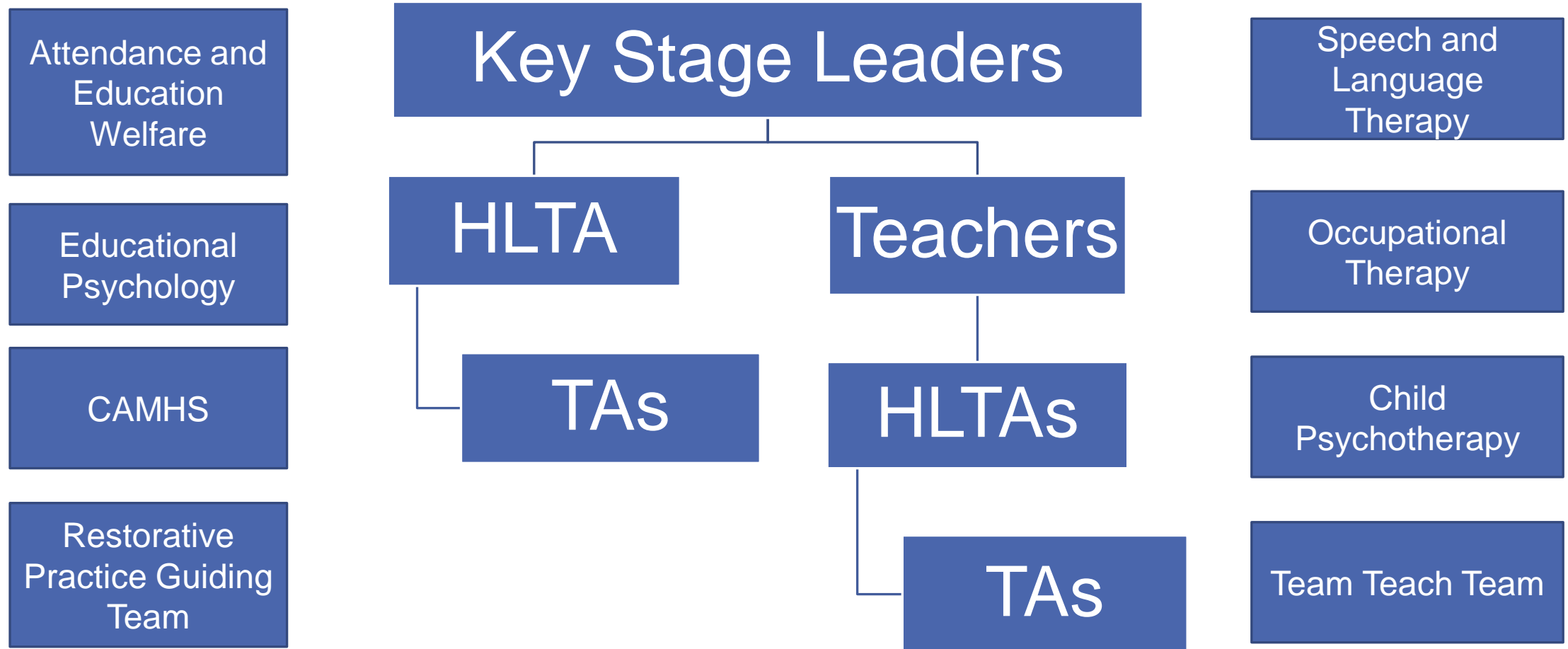
To lead innovation and positive change in the field of Autism

6. Our Resources

To use the resources available for the greatest benefit of the school



Operational Structure



Investment

AREA	COST
CARE AND SAFEGUARDING TEAM	£163,056
AUTISM RESEARCH AND DEVELOPMENT	£43,445
SPECIALIST THERAPEUTIC SUPPORT	£34,807
STAFF TRAINING AND DEVELOPMENT	£102,194
SPECIALIST JOB COACHING	£80,850
TOTAL	£424,352 (9.23%)

Abbot's Lea School today

3'20



Abbot's Lea is the best specialist school in the world

Abbot's Lea School tomorrow



Our Vision and Mission Statement

To be the international Centre of Excellence in Autism education,
research and professional development

Our Motto

We want Abbot's Lea to be the best specialist school in the world!

Contact details

Ania Hildrey, Headteacher of Abbot's Lea School

headteacher@abbotsleaschool.co.uk

Twitter:

@AbbotsLeaSchool

@HeadteacherALS