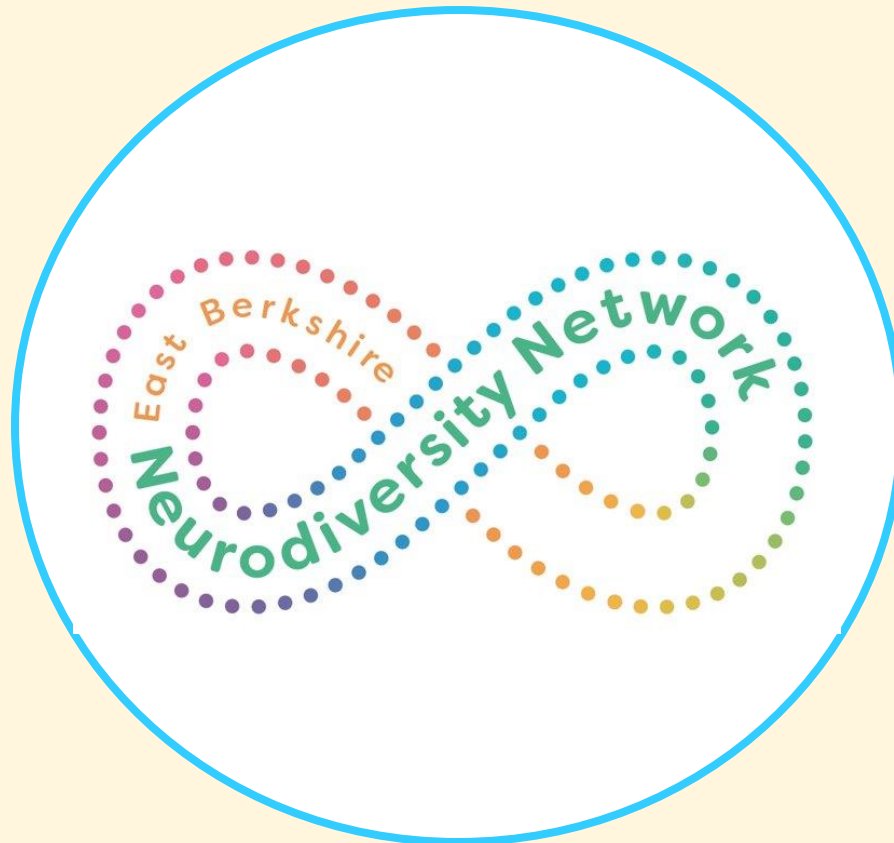
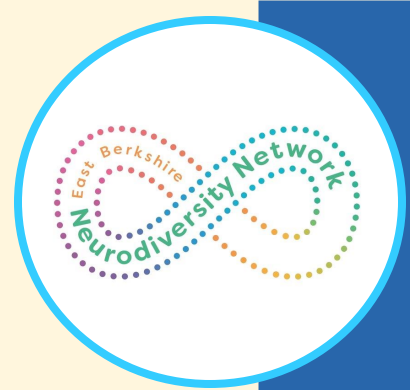


East Berkshire Neurodiversity Network - Relaunch



Plan for the session



Welcome
and
introduction

Guest
speaker –
Ruth Pearse

Roadshow
reflections

Getting
involved

Next steps –
Sarah
Newell

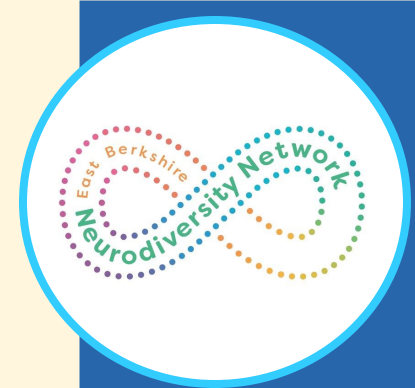
The Roadshows – Slough, RBWM and Bracknell Forest

71 people attended the roadshows

Parents/Carers, East Berkshire CYP workforce and people with lived experiences came along

During each roadshow we explored Neurodiversity, our experiences and how we can work together to shape the network

We heard the voices of young people using the theme - "Small changes, big differences"



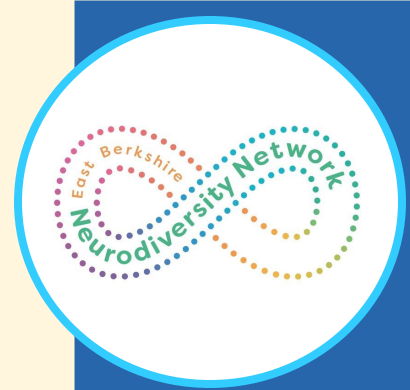
Learning and reflections

Face to face worked well

Small groups created from within the larger group allowed for networking and discussion around shared interests

Many of the parents/carers are also part of the East Berkshire CYP workforce

There's a real passion in people to support Neurodiversity and to contribute to making "Small changes, that make big differences" for children and young people



Key themes

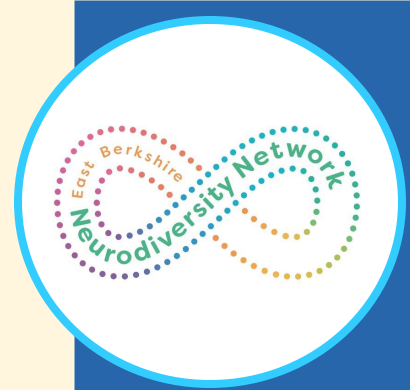
Members shared examples of pockets of good practice

Opportunities needed to develop and promote the profile of the network

Use special interests of group members to unite people and maintain engagement

Members of the network want to use their knowledge of current challenges and get involved to support

Reduce stigma by promoting ND awareness



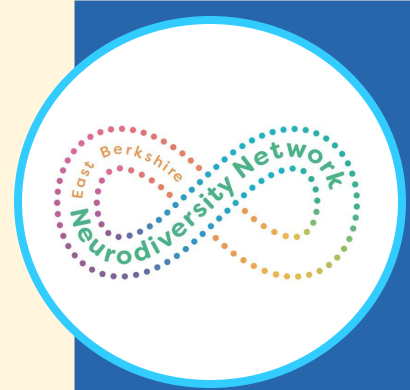
Key themes

Wellbeing of network members if a crucial part of gaining support

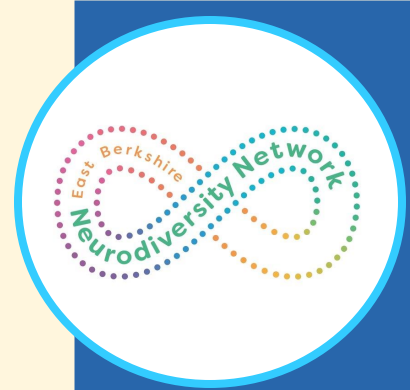
Members becoming actively involved in promoting access to services – creation of a platform to share experiences of services and signpost.

Opportunities for the network to inform members of what is happening in the local area and how they can be involved.

Supporting the workforce to be Neurodiverse friendly



What were people asking?



How do current commissioned service work with service users to help with service improvement /development - can we share these opportunities and other opportunities for members to get involved e.g what these are such as parent/carers forums/patient groups etc

Private assessments - can we have some more info about *right to choose*, what happens in you have had private assessment – health?

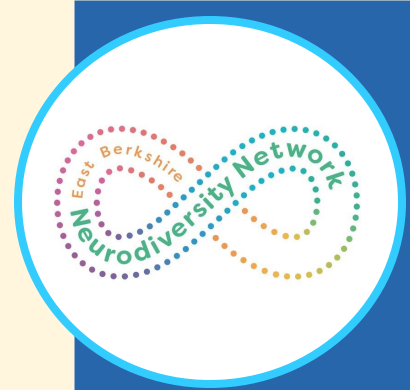
Private assessments - some schools will accept these others don't, is there anything we can do about this?

Do It profiler - there was a lot of positivity about this, and a few questions. First was why are we spending money on developing our own version (e.g BF) when this could offer a standardised approach to move to a more needs lead approach by providing a evidence based cognitive profiling tool.

Can we have more information on the BF Pilot, the Frimley Plan – you say ND is a priority what does this mean etc?

If resource is not be utilised in some areas e.g., you mentioned GEMs can the network to help rethink about this being diverted into an area of need.

Focus of the network going forwards



**Championing
Neurodiversity**



Creating change



Learning together

The network at a glance

Core offer – can happen straight away

East Berkshire
Neurodiversity
Network

Championing
Neurodiversity

Learning Together

Creating change

Bi-monthly sessions (Online and
face to face) - sharing positive
practice

Monthly bulletin – used to update
on network activity (members to
contribute/share resources/news of
services/celebrations etc)

Self care sessions for
Parents/Carers/People with lived
experiences – tap in to NHS services
and invite them to host

Webpage detailing ways to get
involved/guides and
resources/access to monthly
bulletin

ND on demand training available on
ADHDF webpage platform

Plan to achieve

Creating a shared online platform
to promote members interacting
(Link to SHARON)

Peer support circles and change
groups

In person "hosted" network events

ND advocates using a train the
trainer model

Ways to get involved

Contribute to the monthly newsletter

Be a guest speaker and share positive practice

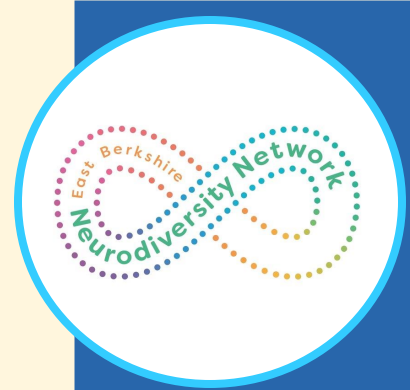
Email us with ideas and experiences

Host a peer support session

Promote the network

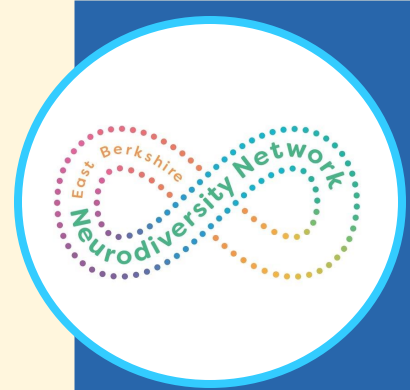
Become a member of the oversight group

Contribute a skill to share

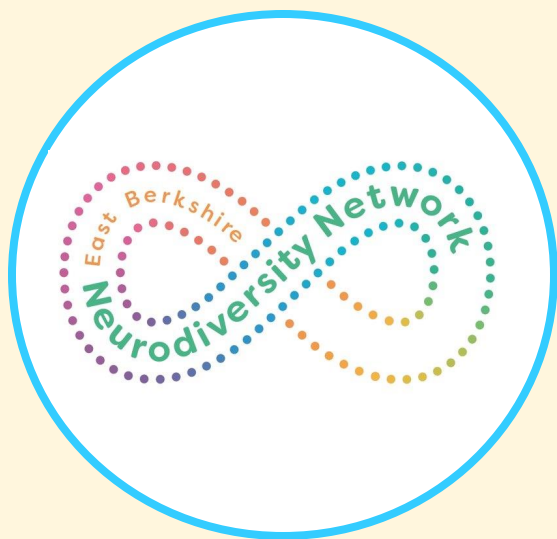


Register

East Berkshire Neurodiversity Network Sign Up Form



We can all make a small
change that will make a big
difference



Thank you!

